

Family data sheet

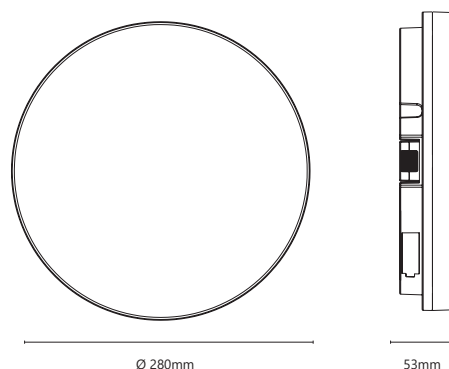
LOGO 4

Ceiling light made of polycarbonate, 3 types to choose from (switchable from 3000K to 4000K without sensor, with microwave sensor 3000K or with microwave sensor 4000K, high light transmission, equipped with highly efficient LED board, CRI > 80Ra, direct distribution, light emission angle 115 °, protection class IP54, including fastening material, no separate converter required (230V DC)



Technical informationen:

Total watt:	18W		
Typ:	Microwave	Microwave	CCT no sensor
Net lumen:	1550lm	1600lm	1550lm-1600lm
Kelvin (CCT):	3000K	4000K	3000-4000K
Angle:	115°		
CRI:	>80a		
Beam angle:	direct		
Protection:	IP54		
Class:	I		
Life expectancy:	50.000h		
Voltage:	220~240V AC/ 230V DC		
Converter:	including integrated control gear		
Dimmability:	not dimmable		



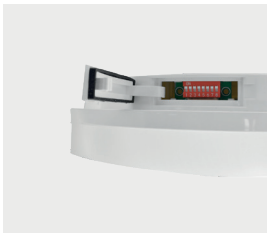
Product overview:

Light emission:

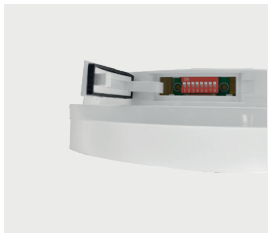


direct

Types:



Microwave Sensor 3000K



Microwave Sensor 4000K

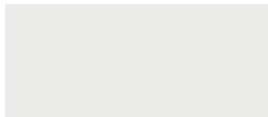


without sensor - CCT switchable
3000K auf 4000K

Light color:



3000K warm white



4000K neutral white

item number	typ	¹ Kelvin	² Type
LW-LR-04- ¹ -IP54- ²	LOGO 4	» CCT « adjustable 3000K to 4000K	no sensor
		» 3000 « 3000K » 4000 « 4000K	» M « Microwave sensor