

## Product family

# CLIP-LOW

Structure profiles made of extruded anodized aluminum, clip-on covers, available per linear meter, can be equipped with LED strips, available with various covers (opal, clear, flat, high, lens), mounting and fastening accessories



## PROPERTIES

- Extruded, anodized aluminum profile
- Polycarbonate cover
- suitable for LED strips up to max. 12mm width
- for stripes IP20 / IP44
- available per running meter

## PARTICULARITIES

- Cable conduit available for wiring
- Profile is also possible with IP68 encapsulation technology



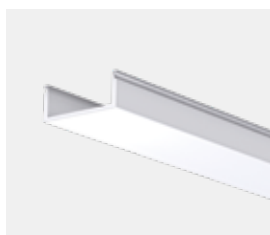
## Product view:

### Profile:

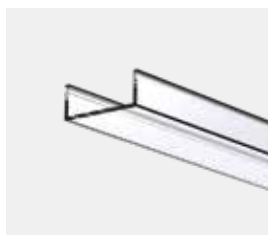


profile  
N68193

### Cover:



opal/ flat  
N68195



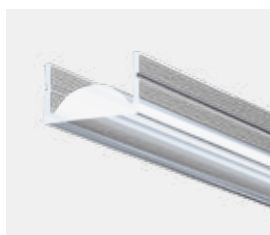
clear/ flat  
N68196



opal/ high  
N68201



opal/ high  
N68201



lens clear 40°  
N68226

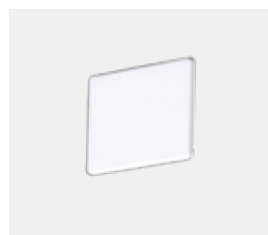
### Accessories:



cable conduit  
N68192



end piece grey (1x)  
N68198



end piece opal (1x)  
N68202



clipable bracket (1x)  
N68200

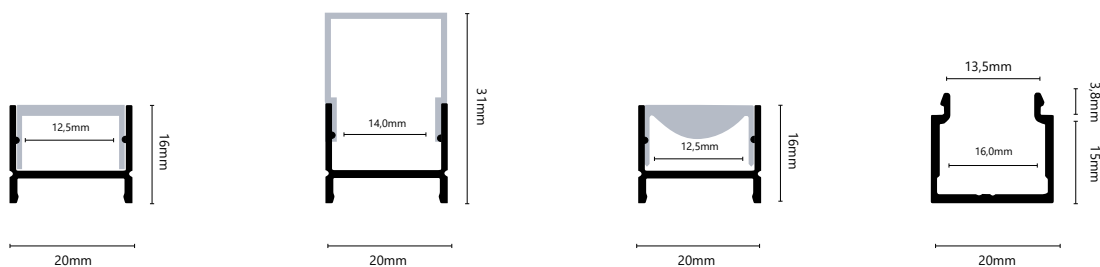


mounting clip fixed (2x)  
N68207



mounting clips  
swiveling (2x)  
N62808

## Drawings:



## Use Stripes:

- for LED Stripes LA-FLEX-05-PREMIUM, LA-FLEX-10-PREMIUM, LA-FLEX-15-PREMIUM, LA-FLEX-20-PREMIUM
- for LED-Stripes LW-FLEX-13-STANDARD, LW-FLEX-21-STANDARD, LW-FLEX-26-STANDARD, LW-FLEX-RGB+W, LW-FLEX-RGB
- for LED-Stripes LW-FLEX-TWOCOLOR, LA-FLEX-Z-05, LA-FLEX-Z-12
- for LED-Stripes LW-FLEX-NANO-05-CC, LW-FLEX-NANO-10-CC, LW-FLEX-NANO-15-CC, LW-FLEX-NANO-RGB-CC IP44

## Use with cable conduit:

