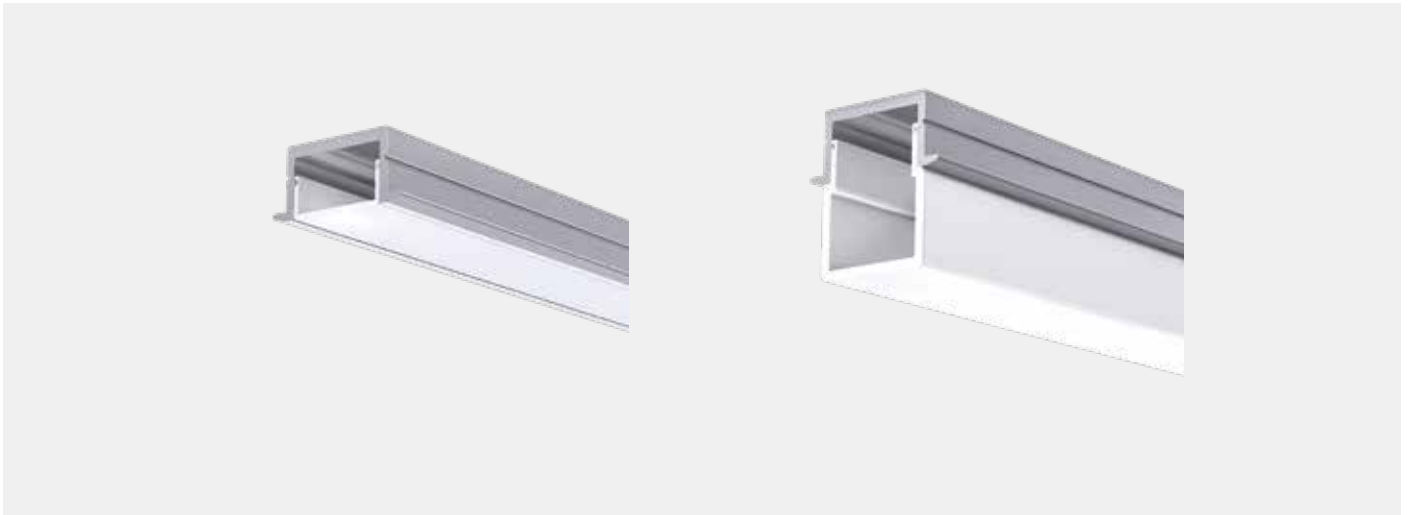


Product family

MICRO-3EB

Recessed profiles made of extruded anodized aluminum, clip-on covers, available per linear meter, can be equipped with LED strips, available with various covers (opal, clear, flat, high, lens), mounting and fastening accessories



PROPERTIES

- Extruded, anodized aluminum profile
- Polycarbonate cover
- suitable for LED strips up to max. FLEX-21
- for stripes IP20 / IP44
- available per running meter

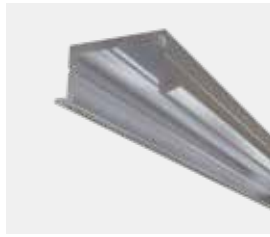
PARTICULARITIES

- Profile is also possible with IP68 encapsulation technology



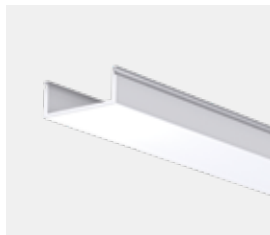
Product view:

Profile:

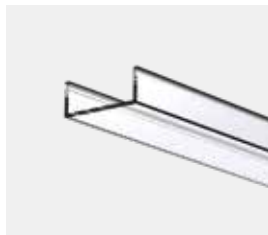


alu profil
N68190

Covers:



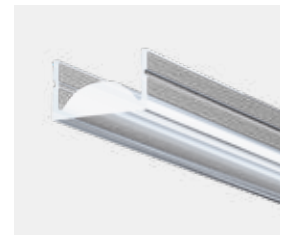
opal/ flat
N68195



clear/ flat
N68196



opal/ high
N68201

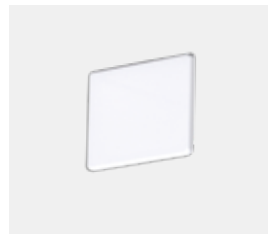


lens clear 40°
N68226

Accessories:

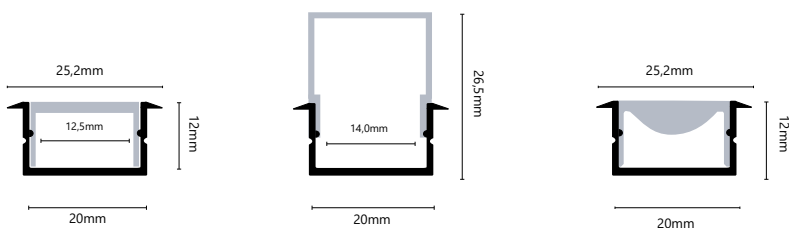


end piece grey (1x)
N68218



end piece opal/ high (1x)
N68202

Drawings:



Use Stripes:

- for LED Stripes LA-FLEX-05-PREMIUM, LA-FLEX-10-PREMIUM, LA-FLEX-15-PREMIUM, LA-FLEX-20-PREMIUM
- for LED-Stripes LW-FLEX-13-STANDARD, LW-FLEX-21-STANDARD
- for LED-Stripes LW-FLEX-TWOCOLOR, LA-FLEX-Z-05, LA-FLEX-Z-12
- for LED-Stripes LW-FLEX-NANO-05-CC, LW-FLEX-NANO-10-CC, LW-FLEX-NANO-15-CC, LW-FLEX-NANO-RGB-CC IP44