

Product family

BREE

Installation on the floor with protection class IP67 which are supplied with 24VDC, extra hardened glass, ATEX cable bushing, neoprene cable IK impact resistance level IK09 up to 10 joules, excluding casting housing (must be ordered separately), excluding converter (not dimmable or dimmable via PUSH / 1-10V / DALI must be ordered separately)



ADVANTAGES

- In-ground luminaire IP67
- excl. converter (not dimmable or dimmable via PUSH / 1-10V / DALI must be ordered separately)

CHARACTERISTIC

- In-ground luminaire with extra hardened glass
- IK impact resistance level IK09 up to 10 joules
- 4 selectable housing colors
- Degree of protection IP67
- LED beam angle standard 60°
- Other light colors and beam angles on request.

Product overview:

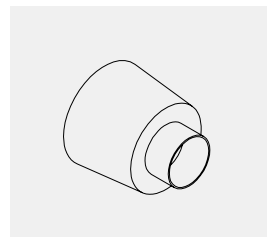
Types:



BREE ROUND



BREE SQUARE



casting surround for BREE
(optional)

Light emission:



direct

Housing color:



grey



black

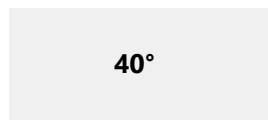


copper

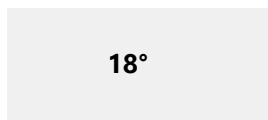


steel AISI 316L

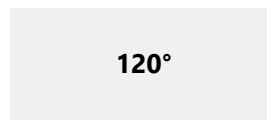
Angle:



Standard



(on request)



(on request)

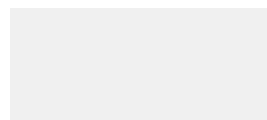
Light color:



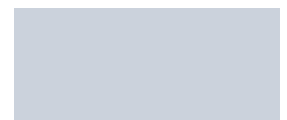
2700K superwarm white



3000K warm white



4200K neutral white
(on request)



6000K cold white
(on request)



blue (on request)

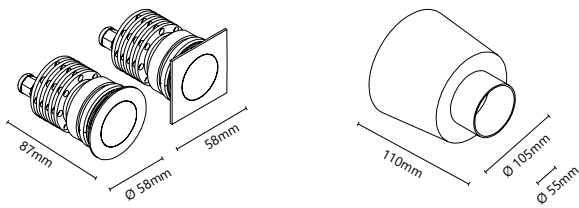


green (on request)



red (on request)

Drawings:



Installation depth 87mm

Article overview:

item numer	types	① angle	② kelvin	③ color
FL-BR11 ①②③	BREE ROUND LED 7W 24V DC	» 3 « 60°	» 0 « 2700K	» G « grey
FL-BR12 ①②③	BREE SQUARE LED 7W 24V DC		» 1 « 3000K	» N « black » K « copper » Z « steel AISI 316L
FL-CSDS10	Eingießgehäuse für BREE			

Technical information:

BREE

Total watt:	7W	
Net lumen:	630lm	700lm
Kelvin (CCT):	2700K	3000K
Angle:	60° Standard	
CRI:	>85Ra	
Light emission:	direct	
Protection:	IP67	
Life expectancy:	50.000h	
Voltage:	100~230V AC/ 24V DC	