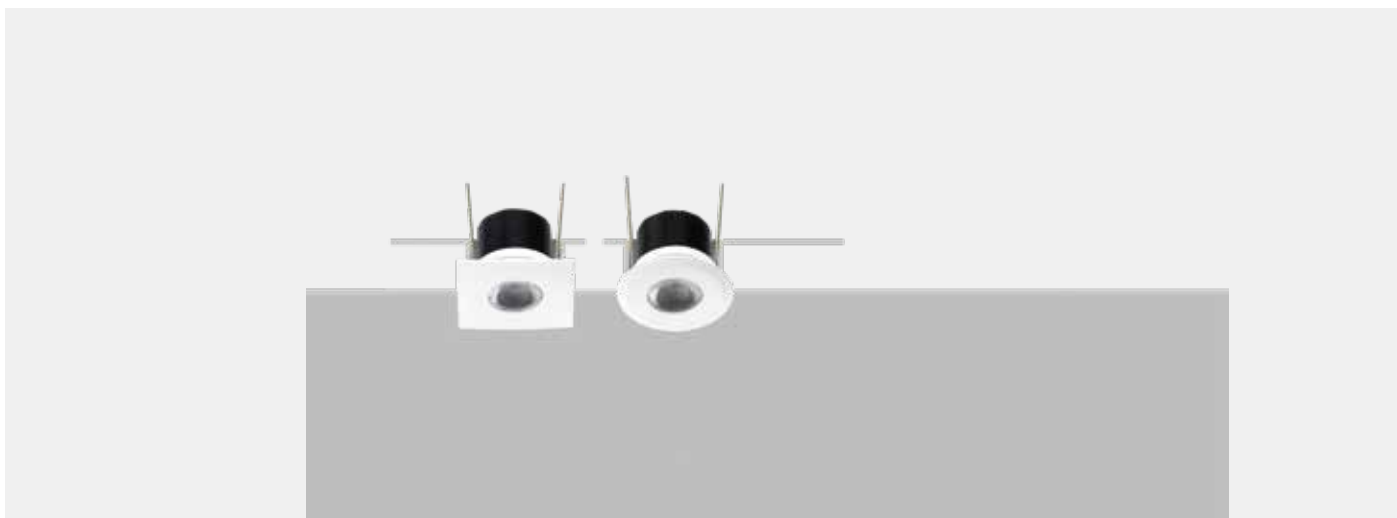


Product family

SELENE

Wall and ceiling installation of high structural and optical quality, without converter dimmable via PUSH / 1-10V / DALI must be separated

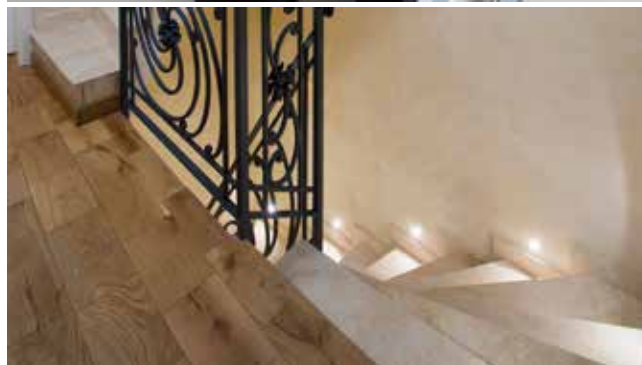
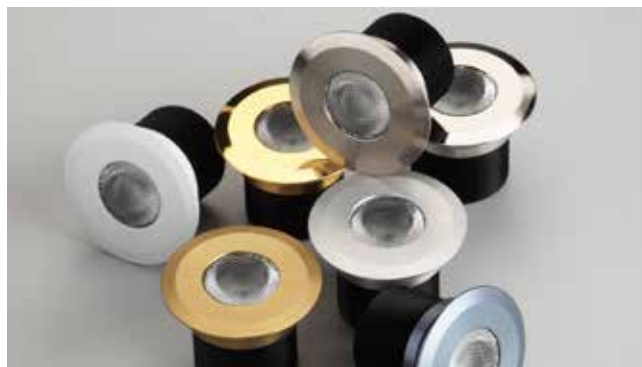


ADVANTAGES

- excl. converter (not dimmable or dimmable via PUSH / 1-10V / DALI must be ordered separately)

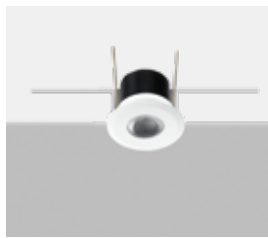
CHARACTERISTIC

- Fixed recessed luminaire
- 8 selectable housing colors
- Degree of protection IP65
- LED beam angle standard 25°
- Other light colors and beam angles on request.

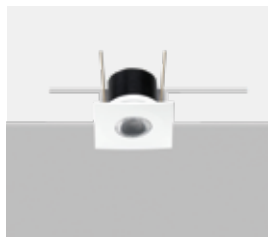


Product overview:

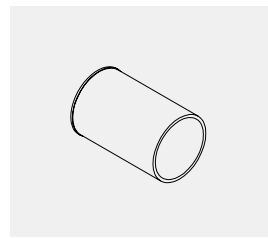
Types:



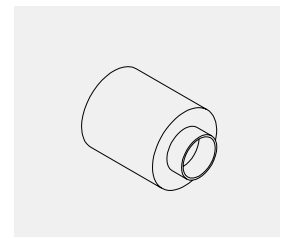
SELENE ROUND



SELENE SQUARE



Casting housing SELENE
(optional)



Casting housing SELENE
(optional)

Light emission:



direct

Housing color:



aluminum



bronze



chrome



gold



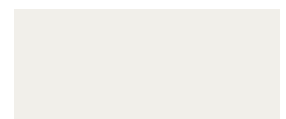
INOX 316L



black

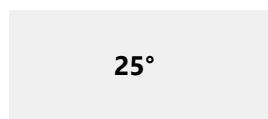


titanium



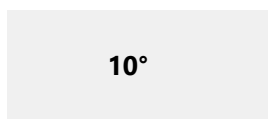
white

Angle:



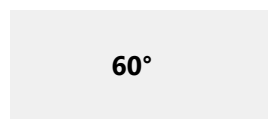
25°

Standard



10°

(on request)



60°

(on request)

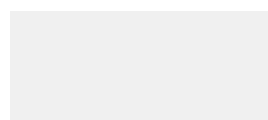
Light color:



2700K superwarm white



3000K warm white



4200K neutral white
(on request)



6000K cold white
(on request)



blue (on request)

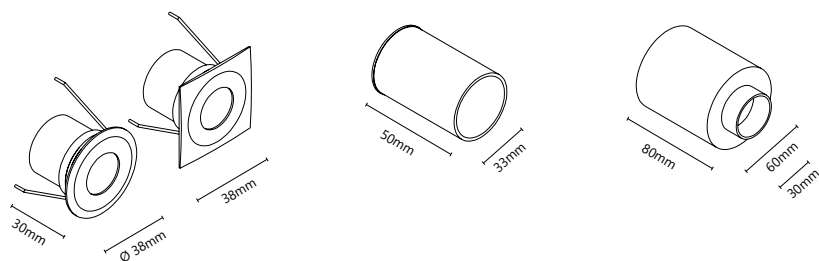


green (on request)



red (on request)

Drawings:



Cut-Out Ø 30mm
Installation depth 30mm

Article overview:

item number	types	① angle	② kelvin	③ colors	
FL-SP1 ① ② ③	SELENE ROUND LED 1W 350mA oder 2W 500mA	» 2 « 25°	» 0 « 2700K » 1 « 3000K	» A « aluminum	» I « INOX 316L
FL-SP2 ① ② ③	SELENE SQUARE LED 1W 350mA oder 2W 500mA			» B « bronze	» N « black
FL-CS1001	Casting housing			» C « chrome	» T « titanium
FL-CS1006	Casting housing			» G « gold	» W « white

Technical information:

SELENE

Total watt:	1W 2W
Net lumen:	89lm (1W) 93lm (1W) 128lm (2W) 133lm (2W)
Kelvin (CCT):	2700K 3000K
Angle:	25° Standard
CRI:	>85Ra
Light emission:	direct
Protection:	IP65
Life expectancy:	50.000h
Voltage:	100~230V AC/ 350mA DC (1W) 100~230V AC/ 500mA DC (2W)