

Product family

TERA 7

Installation on the floor with protection class IP67, extra hardened glass, ATEX cable bushing, neoprene cable IK impact resistance level IK09 up to 10 joules, excluding casting housing (must be ordered separately), excluding converter (not dimmable or dimmable via PUSH / 1-10V / DALI must be ordered separately)



ADVANTAGES

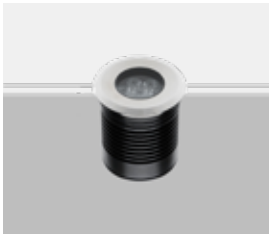
- In-ground luminaire IP67
- excl. converter (not dimmable or dimmable via PUSH / 1-10V / DALI must be ordered separately)

CHARACTERISTIC

- In-ground luminaire with extra hardened glass
- IK impact resistance level IK09 up to 10 joules
- 4 selectable housing colors
- Degree of protection IP67
- LED beam angle standard 40°
- Other light colors and beam angles on request.

Product overview:

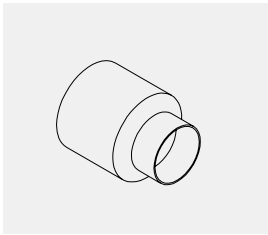
Types:



TERA 7 ROUND



TERA 7 SQUARE



casting surround for TERA 7 (optional)

Light emission:



direct

Housing color:



grey



black

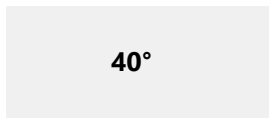


copper

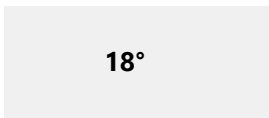


steel AISI 316L

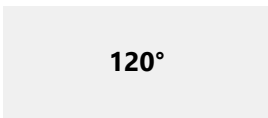
Angle:



Standard



(on request)



(on request)

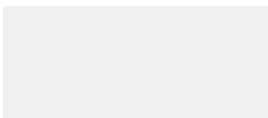
Light color:



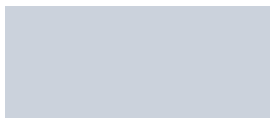
2700K superwarm white



3000K warm white



4200K neutral white (on request)



6000K cold white (on request)



blue (on request)

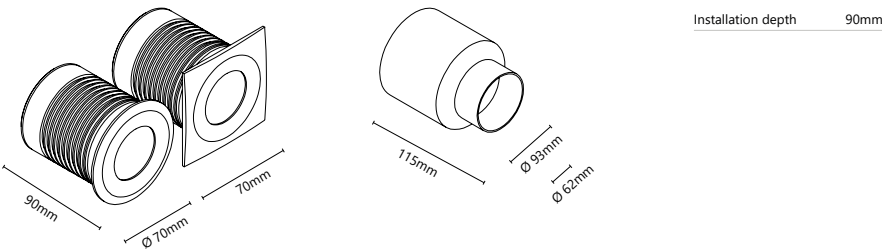


green (on request)



red (on request)

Drawings:



Article overview:

item numer	types	1 angle	2 kelvin	3 color
FL-XT31 1 2 3	TERA 7 ROUND LED 7W 350mA	» 2 « 40°	» 0 « 2700K » 1 « 3000K	» G « grey » N « black » K « copper » Z « steel AISI 316L
FL-XT32 1 2 3	TERA 7 SQUARE LED 7W 350mA			
FL-CSXJ01	casting surround for TERA 7			

Technical information:

TERA 7		
Total watt:	7W	
Net lumen:	623lm	651lm
Kelvin (CCT):	2700K	3000K
Angle:	40° Standard	
CRI:	>85Ra	
Light emission:	direct	
Protection:	IP67	
Life expectancy:	50.000h	
Voltage:	100~230V AC/ 350mA DC	