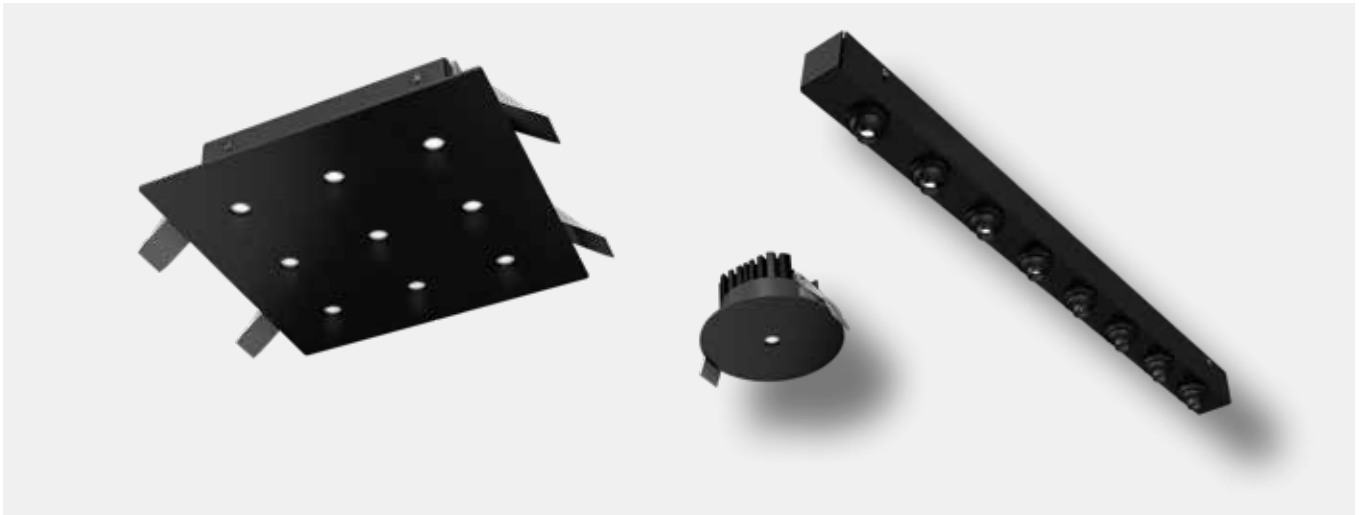


Product family

LFO TECHNIC

Downlight with LFO technology (plastic spotlight lens), special lens optics are integrated behind the ceiling plane, light emission takes place via a small hole of an IRIS with only 8-10mm diameter, excellent light distribution, rotationally symmetrical cut-off, excellent efficiency, installation in various designs of ceilings possible, by cold white and warm white light colors, the color temperature can be continuously changed from daylight white to warm white



CHARACTERISTIC

- hole emitter lens made of plastic
- ceiling installation or installation in plasterboard ceilings
- 5 types to choose from
- different color temperatures can be selected
- housing color: black or white
- degree of protection: IP20
- external converter (order separately)

ADVANTAGES

- special lens optics
- TW version - stepless from daylight white on warm white



Product overview:

Installation:



recessed ceiling



for plasterboard ceiling

Types:



LFO 1X1



LFO 2X2



LFO 3X3



LFO 1X4

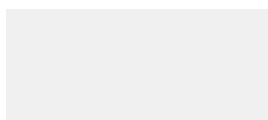


LFO 1X8

Housing color:



black



white

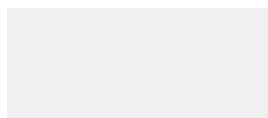
Light color:



2700K super warm white



3000K warm white

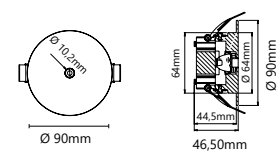


4000K neutral white

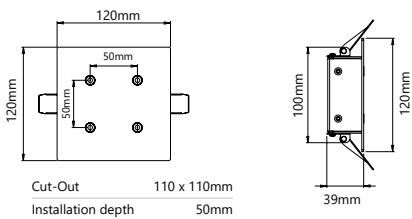


TW 2700K - 5700K

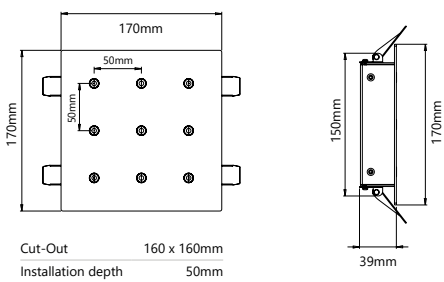
Drawings:



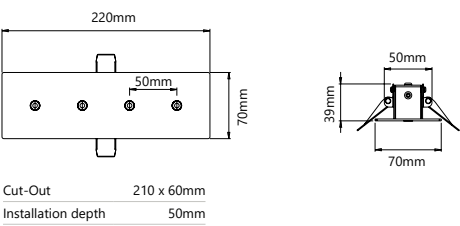
Cut-Out Ø 68mm
Installation depth 50mm



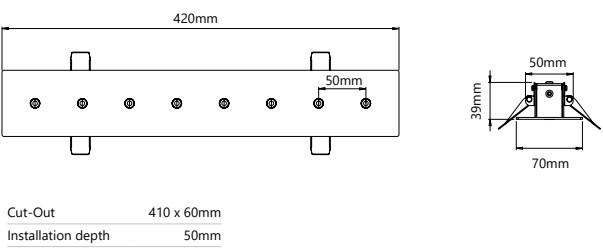
Cut-Out 110 x 110mm
Installation depth 50mm



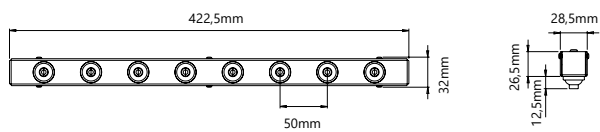
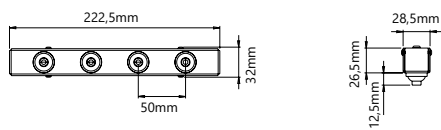
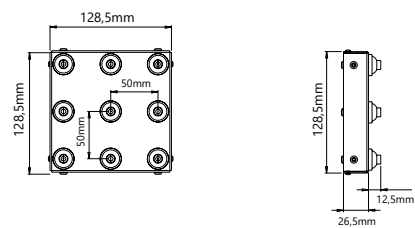
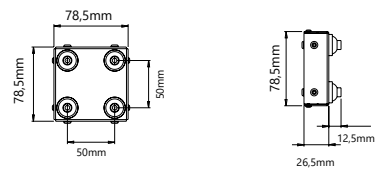
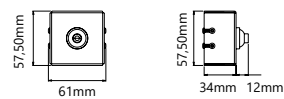
Cut-Out 160 x 160mm
Installation depth 50mm



Cut-Out 210 x 60mm
Installation depth 50mm



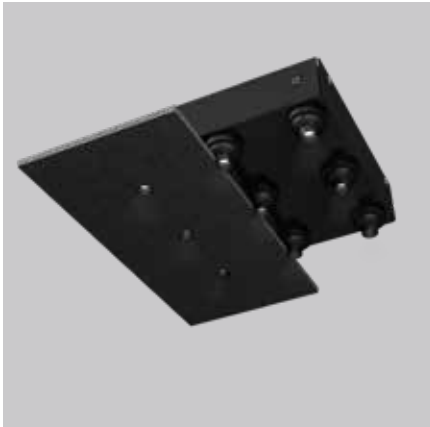
Cut-Out 410 x 60mm
Installation depth 50mm



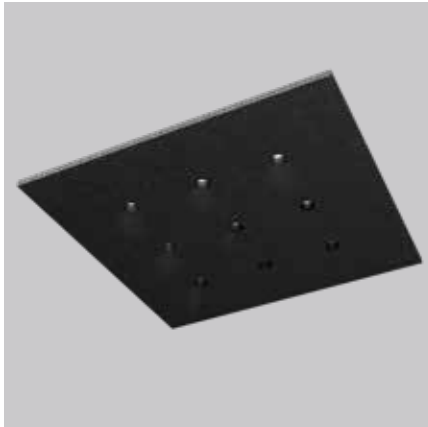
Article overview:

item number	① types	② watt	③ kelvin	④ lens	⑤ color
LW-LFO-1-①-②-③-④-⑤	» D « recessed ceiling	» 01 « 4W (LOW) » 02 « 8W (HIGH)	» 2700 « » 3000 « » 4000 «	» 1 « 2x 20° » 2 « 2x 38°	» B « black » W « white
	» R « Installation for plasterboard ceiling	» 03 « 4W (TW)	» TW « (2700-5700K)		» B « black
LW-LFO-2-①-②-③-④-⑤	» D « recessed ceiling	» 01 « 8W (LOW) » 02 « 11,2W (HIGH)	» 2700 « » 3000 « » 4000 «	» 1 « 2x 20° » 2 « 2x 38°	» B « black » W « white
	» R « Installation for plasterboard ceiling	» 03 « 8W (TW)	» TW « (2700-5700K)		» B « black
LW-LFO-3-①-②-③-④-⑤	» D « recessed ceiling	» 01 « 18W (LOW) » 02 « 25,2W (HIGH)	» 2700 « » 3000 « » 4000 «	» 1 « 2x 20° » 2 « 2x 38°	» B « black » W « white
	» R « Installation for plasterboard ceiling	» 03 « 16W (TW)	» TW « (2700-5700K)		» B « black
LW-LFO-4-①-②-③-④-⑤	» D « recessed ceiling	» 01 « 8W (LOW) » 02 « 11,2W (HIGH)	» 2700 « » 3000 « » 4000 «	» 1 « 2x 20° » 2 « 2x 38°	» B « black » W « white
	» R « Installation for plasterboard ceiling	» 03 « 8W (TW)	» TW « (2700-5700K)		» B « black
LW-LFO-8-①-②-③-④-⑤	» D « recessed ceiling	» 01 « 16W (LOW) » 02 « 22,4W (HIGH)	» 2700 « » 3000 « » 4000 «	» 1 « 2x 20° » 2 « 2x 38°	» B « black » W « white
	» R « Installation for plasterboard ceiling	» 03 « 16W (TW)	» TW « (2700-5700K)		» B « black

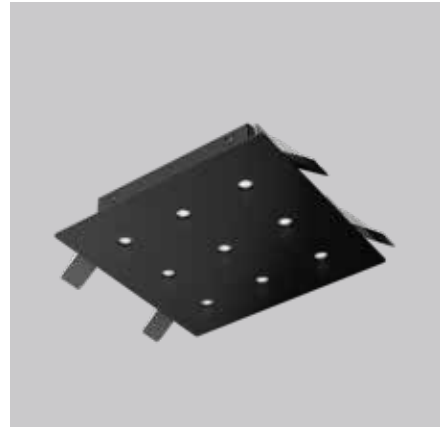
Application example:



Recessed ceiling solution, the lights are from placed on top of the false ceilings and only the openings of the lenses look through the ceiling.



In-ceiling solution



Recessed luminaires with cover to snap into place in a ceiling cut-out.

